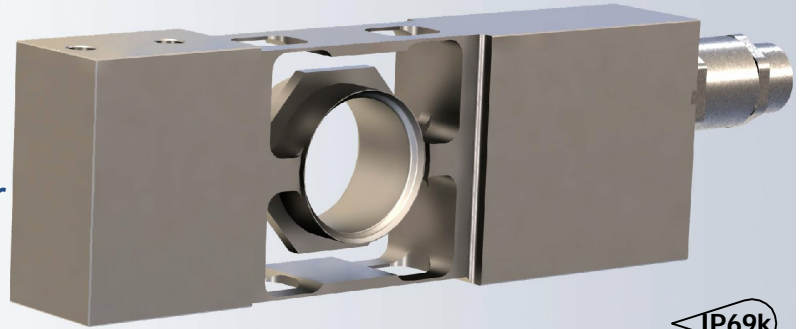


Digital single point load cell designed for high speed filling and check weighing applications. The stainless steel load cell is hermetically sealed and is ideal for use in heavy washdown applications



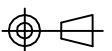
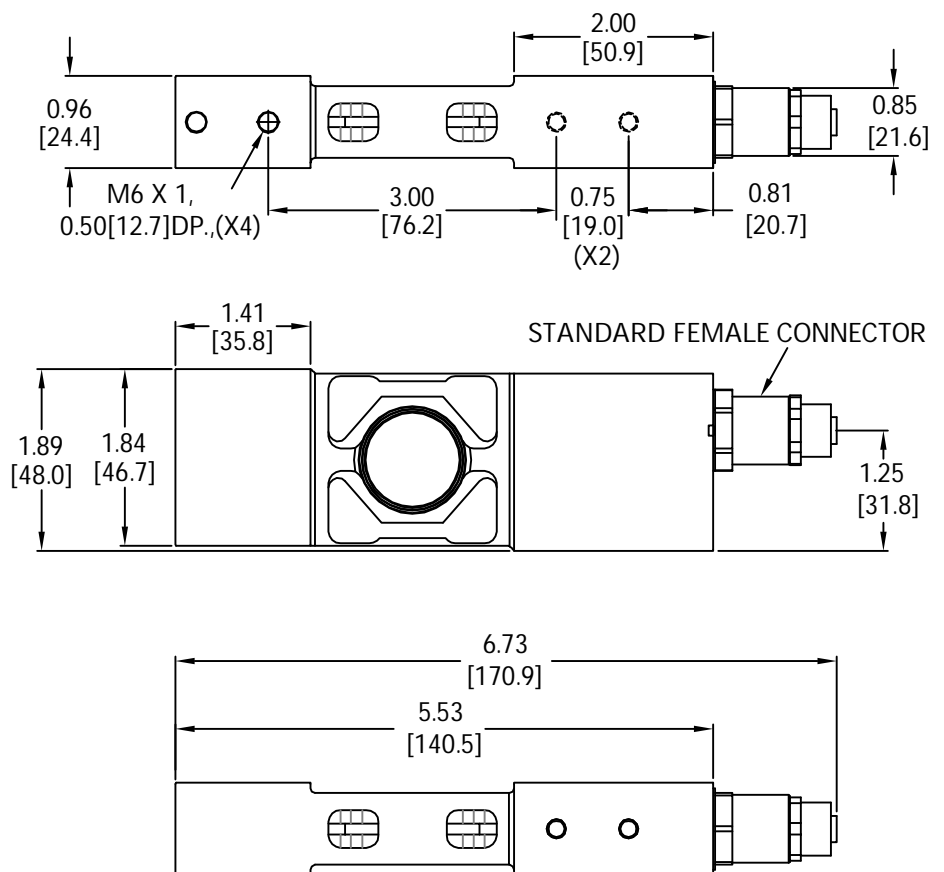
FEATURES

- Capacities from 10 to 50 kg.
- Stainless steel construction.
- Environmental Protection IP69k with complete hermetic sealing.
- AD conversion rate up to 1200upd./sec.
- Free professional software for setting up the digital load cell.
- Maximum platform size up to 450 x 450 mm.

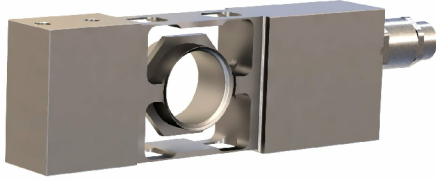
APPLICATIONS

- Bench scales, conveyor scales, check weighers, filling plants, packaging machines and industrial process control.

OUTLINE DIMENSIONS



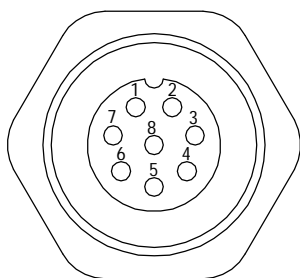
single point SPD 4046D



WIRING

Standard Female Connector Signal Electronics M12AF0008		
Pin No.	RS-232+CAN	RS-485+RS-422
1	GND1	GND1
2	PROGRAM	PROGRAM
3	CANH	Rx+
4	TRIGGER INPUT	TRIGGER INPUT
5	CANL	Rx-
6	RxD	Tx-
7	TxD	Tx+
8	PWR+	PWR+

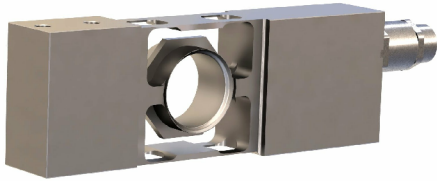
PIN Configuration



SPECIFICATIONS

Model	SPD			
Capacities (Emax)	kg	10	20	50
Recommended min. external division	g	1	2	5
PERFORMANCES				
Accuracy class according to the OIML R60	C3			
Maximum load cell verification interval (Vmin)	Emax/10000			
Combined error	%FS	≤±0.017		
Creep @ 30min	%FS	≤±0.017		
Zero balance, raw counts	Increments	±2000		
Output resolution at full load, raw counts	Increments	256000	512000	512000
Internal AD conversion rate	upd./sec	1200		
Fix, digital low pass IIR filter, default	Hz	18 (Supress 50Hz and 60Hz Influence)		
Adjustable, digital low pass IIR filter Adjustable, digital low pass FIR filter	Hz	18-0.25; Selectable in 8 Steps 40-5; Selectable in 8 Steps		
Adjustable, external output update rate	upd./sec	1200-9; Selectable in 8 Steps		
GENERAL I/O's				
Hardware interface, CAN version Hardware interface, RS version	CAN and RS232 RS485 and RS422 (Both four wire)			
Data transmission rates CAN Data transm. rates RS485/RS422/RS232	kb	125;250;500;1000 9.6;19.2;38.4;57.6;115.2;230.4;460.8		
Protocol CAN Protocol RS485/ RS422/ RS232	CAN open ASCII or Modbus RTU			
Logical input, programmable	Trigger level 2-30Vdc, <3mA, Ref to Gnd.			
Power supply	VDC	10-30 ≤ 0.4 Watt		
Connections	Standard 8 pin, female M12AF 0008			
INFLUENCES				
Safe load limit	%* Emax	300	150	150
Ultimate load	%* Emax	600	300	300
Eccentric loading error acc. to OIML R76	%FS	±0.0233		
Max Platform Size	mm	450 x 450		
Temperature effect on zero	%FS/°C	0.001		
Temperature effect on span	%FS/°C	0.001		
Temperature range	°C	Operating: -10/+40 Storage: -40/+70		
EMC Performance	MID Class E2 (Industrial locations)			
I/O Protection, all pins	Reversed polarity; Excess voltage and surge			
Insulation body/ Electronics (VDC)	GΩ	≥1		
Vibration	2.5G Operational; 5G Non-Operational			
Environmental Protection IEC529	Body IP69k; Connectors IP68			
Corrosion resistance	All stainless steel			

single point
SPD
4046D



PART NUMBERS

Capacity (kg)	Option	Part No.
10	Single IO (RS232+CAN)	4046D-001-00
20	Single IO (RS232+CAN)	4046D-000-00
50	Single IO (RS232+CAN)	4046D-002-00
10	Single IO (RS485+RS422)	4046D-001-01
20	Single IO (RS485+RS422)	4046D-000-01
50	Single IO (RS485+RS422)	4046D-002-01