

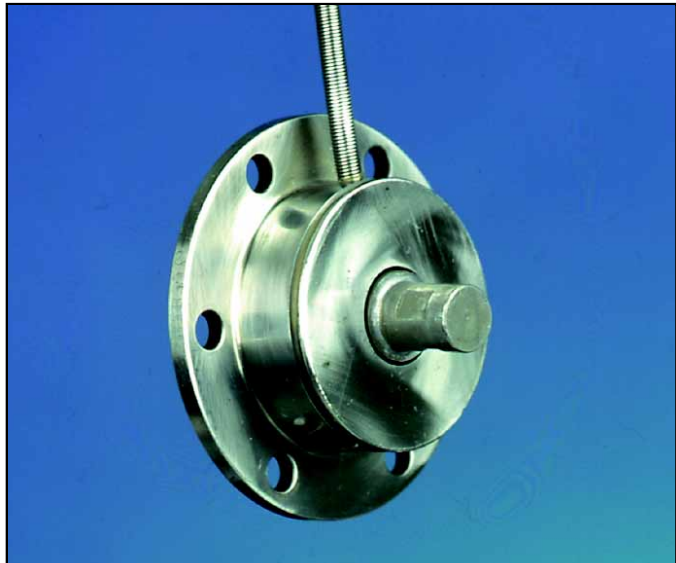
# LXT 910/912 - MINIATURE TORQUE CELL

The models LXT 910 and LXT 912 Miniature Reaction Torque Transducers are engineered for minimum size and an impressive 0.1% non-linearity. Four bonded strain gages are positioned on a special machined portion of the transducer to effectively measure even slight torque motion. These models operate and are calibrated in both directions. A modular, stainless steel construction and no moving parts, provide excellent durability under harsh industrial conditions.

- **BI-DIRECTIONAL**
- **COMPACT DESIGN**
- **EXCELLENT ACCURACY**
- **STAINLESS STEEL**

## SPECIFICATIONS

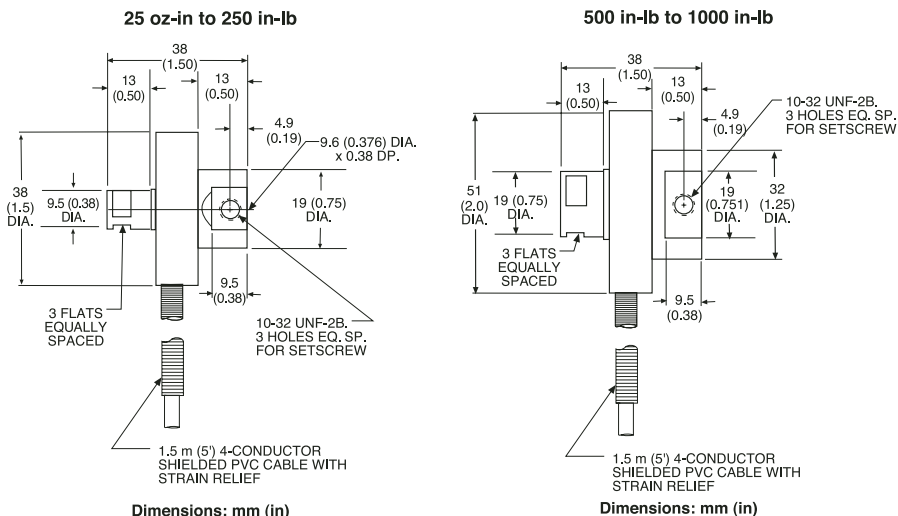
LOAD RANGES:	25 in.oz to 250 in.lb
LINEARITY:	±0.1% F.S.
HYSTERESIS:	±0.1% F.S.
REPEATABILITY:	±0.03% F.S.
MATERIAL:	Stainless Steel
TEMPERATURE RANGE:	60° to 160°F
OUTPUT:	2 mv/v
BRIDGE RESISTANCE:	350 ohm
EXCITATION:	10 Vdc
SAFE OVERLOAD:	50% Over Capacity
DEFLECTION:	
25-in/oz - 50 in/lb:	.0027 Radians
100, 300 in/lb:	.00255 Radians
CABLE:	5 ft



## AVAILABLE RANGES

25, 30, 100, 120, 150, 200 in.oz  
 25, 50, 100, 250 in.lb  
 500, 1000 in.lb (LXT 910 only)

LXT 910



LXT 912

