

LXT 600 REACTION TORQUE TRANSDUCER WITH SQUARE DRIVE

The TDF Series 600 Reaction Torque Sensors allow easy monitoring and calibration of mechanical torque wrenches and other torque-sensitive devices used in production and automated assembly applications. Made in the USA of 17-4 stainless steel with an aluminum cover, this sturdy device can be mounted anywhere by means of its flange, and coupled to any square-drive instrument for accurate torque measurement. Its versatile housing design allows it to be customized to any test situation, and its use of metal foil strain gauge technology assures accurate measurements. Different torque range capacities are available, as are different sized square drives and flange configurations. Output is by means of a Bendix six-pin PTO6E-10-6P plug. Optional mating receptacle available.

- **DESIGNED FOR TORQUE AUDITING AND CALIBRATION**
- **AVAILABLE IN A VARIETY OF TORQUE RANGES**
- **STURDY STAINLESS STEEL CONSTRUCTION**
- **CAN BE ADAPTED TO ANY TEST SITUATION**
- **OUTPUT BY MEANS OF A SIX-PIN BENDIX CONNECTION**

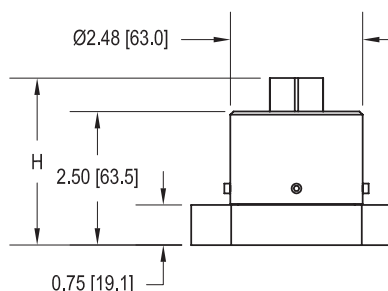
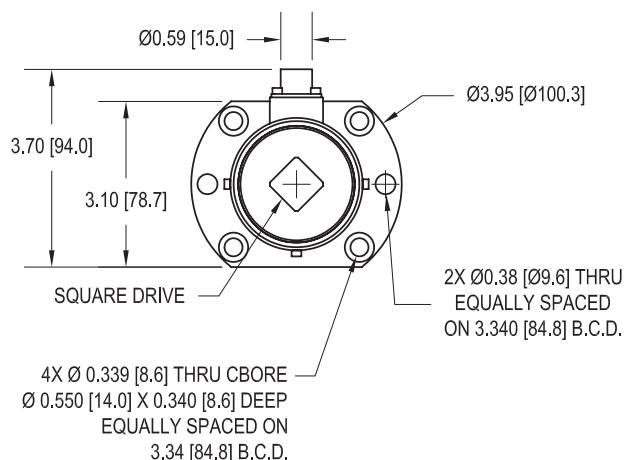
SPECIFICATIONS

CAPACITY:	1200 – 24000 in-lb (150 – 2712 Nm)
RATED OUTPUT:	2 mV/V nominal
SAFE OVERLOAD:	150% of rated output
ZERO BALANCE:	±1% of rated output
EXCITATION VOLTAGE:	20 Vdc or Vac
BRIDGE RESISTANCE:	700 ohm
NONLINEARITY:	±0.1% of rated output
HYSTERESIS:	±0.1% of rated output
NONREPEATABILITY:	±0.2% of rated output
OPERATING TEMPERATURE:	-60 to 200° F (-50 to 92° C)
WEIGHT:	46 ounces (1.3 kg)

AVAILABLE RANGES

Capacity in-lb (Nm)	H inches (mm)	Square Drive	Torsional Stiffness (in-lb/rad)
1200 (150)	3.12 (79.4)	1/2"	3.22 X 10 ⁵
2400 (300)	3.12 (79.4)	1/2"	6.00 X 10 ⁵
6000 (700)	3.43 (87.1)	3/4"	1.7 X 10 ⁶
12000 (1400)	3.62 (92)	1"	3.60 X 10 ⁶
24000 (2712)	3.63 (92)	1"	3.60 X 10 ⁶

LXT 600

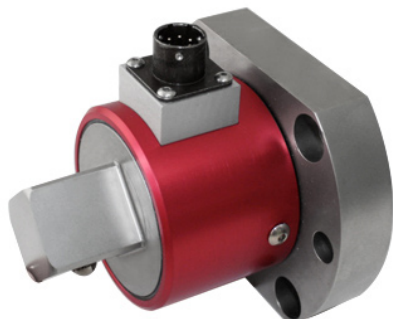


CAPACITY

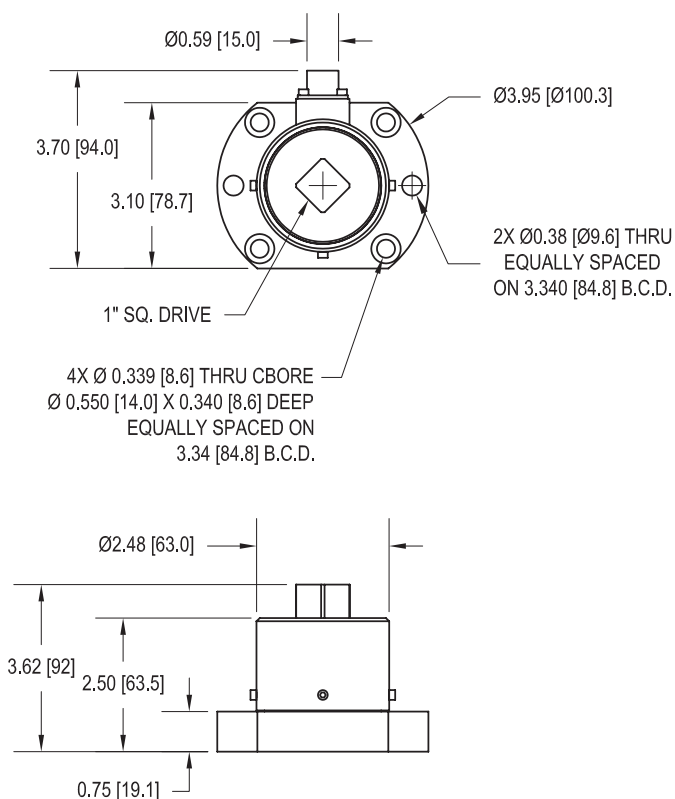
1200 IN-LB (150 NM) — 1/2" SQUARE DRIVE
 2400 IN-LB (300 NM) — 1/2" SQUARE DRIVE
 6000 IN-LB (700 NM) — 3/4" SQUARE DRIVE

LXT SERIES 600 REACTION TORQUE TRANSDUCER WITH SQUARE DRIVE

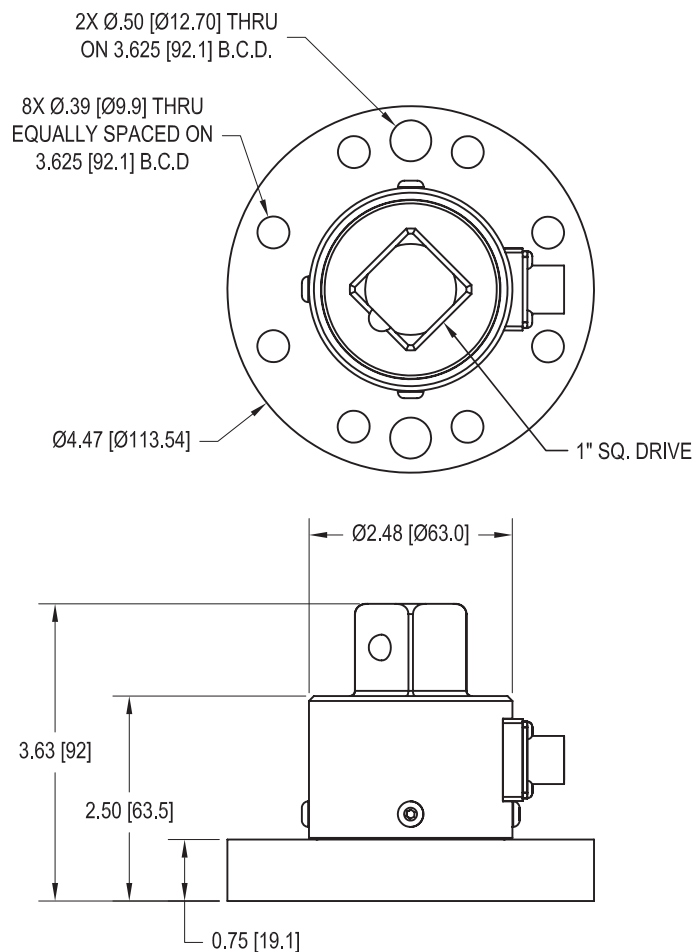
LXT 650



LXT 675



CAPACITY
12000 IN-LB (1400 NM) — 1" SQUARE DRIVE



CAPACITY
24000 IN-LB (2712 NM) — 1" SQUARE DRIVE