

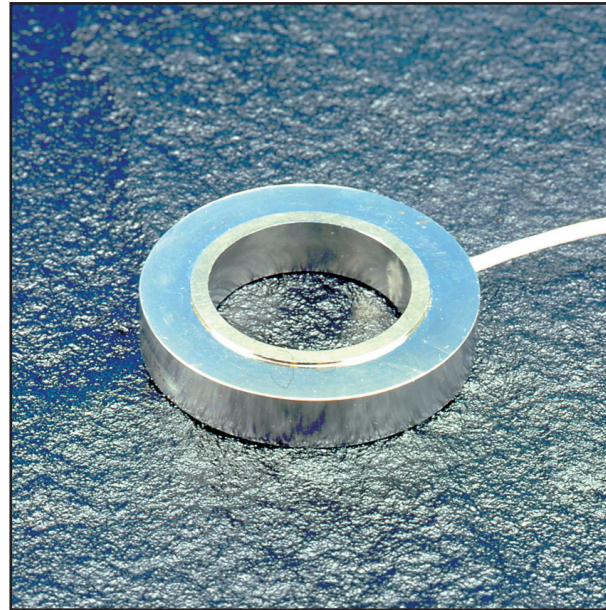
LKCP 476 - DONUT LOAD CELL

Model LKCP 476 is a donut shaped load cell, and is an economical answer for applications requiring a through-hole design. Such applications include bolt force measurement, post or leg mount and rolling mill systems. These models are used in compression applications. For optimum performance these models must be mounted between load surfaces which are flat and parallel. The extremely low profile and compact design, combined with their all stainless steel construction and environmental protection have a proven reliability in tough industrial applications.

- **COMPRESSION ONLY**
- **THRU-HOLE DESIGN**
- **STAINLESS STEEL**

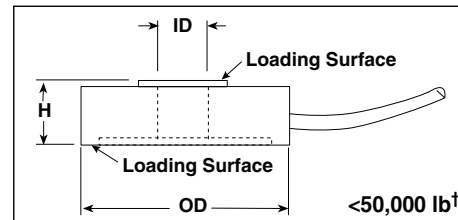
SPECIFICATIONS

LOAD RANGES:	1000 lb to 100,000 lb
ACCURACY:	±0.5% F.S.
LINEARITY:	±0.5% F.S.
REPEATABILITY:	±0.1% F.S.
MATERIAL:	Stainless Steel
TEMPERATURE RANGE:	60° to 160° F
OUTPUT:	2 mV/V
BRIDGE RESISTANCE:	350 ohm
EXCITATION:	10 Vdc
SAFE OVERLOAD:	150% of Capacity
CABLE:	5 ft.



DIMENSIONS	O.D	H
All Ranges:	2.50	1.0

WIRE	CONNECTION
Green	+Output
White	-Output
Black	-Input
Red	+Input

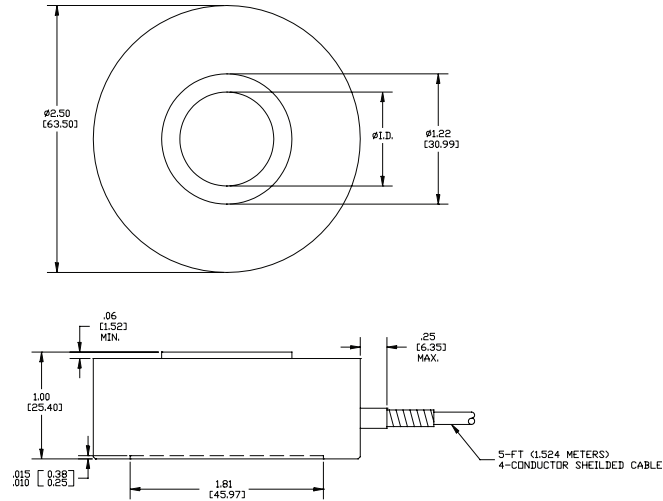


† Units >50,000 lb top and bottom loading surfaces are through the center hub.

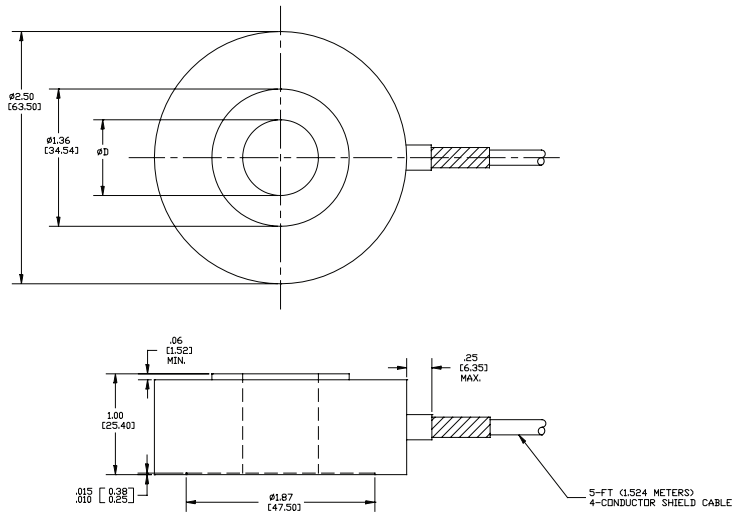
AVAILABLE INSIDE DIAMETERS												
Capacity	.250"	.375"	.500"	.625"	.750"	.875"	.938"	1.00"	1.13"	1.25"	1.38"	1.50"
1000	X	X	X	X	X	X	X	X	X	X	X	X
2000	X	X	X	X	X	X	X	X	X	X	X	X
3000	X	X	X	X	X	X	X	X	X	X	X	X
4000	X	X	X	X	X	X	X	X	X	X	X	X
5000		X	X	X	X	X	X	X	X	X	X	X
7500		X	X	X	X	X	X	X	X	X	X	X
10,000		X	X	X	X	X	X	X	X	X	X	X
15,000			X	X	X	X	X	X				
20,000			X	X	X	X	X	X				
30,000			X	X	X	X	X	X				
40,000			X	X	X	X	X	X				
50,000			X	X	X	X	X	X				
75,000			X	X	X	X	X	X				
100,000			X	X	X	X	X	X				

LKCP 476 - DONUT LOAD CELL

1000 lb. to 10,000 lb.



15,000 lb. to 40,000 lb.



50,000 lb. to 100,000 lb.

