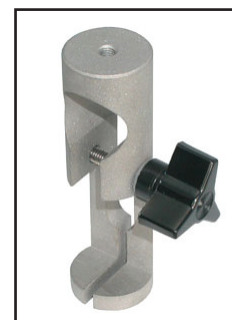
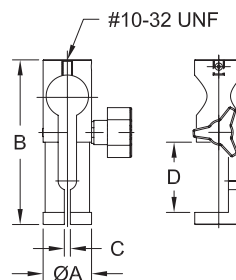


WIRE TERMINAL GRIPS

For testing wire terminals, cables, connectors, and other samples for pull testing.

Note: All dimensions presented as IN [MM].

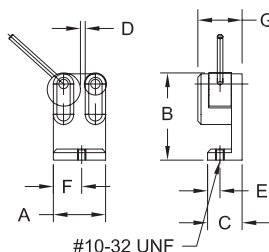
Model No.	Capacity lbF [N]	Weight lb [kg]	ØA	B	C	D
G1001	200 [1000]	0.29 [0.13]	1.00 [25.4]	3.40 [86.4]	0 - 0.125 [0 - 3.1]	1.45 [36.8]
G1001-1					0.125 - 0.25 [3.1 - 6.3]	
G1001-2					0.25 - 0.375 [6.3 - 9.5]	



DUAL ROLLER GRIP

For securing the ends of wire, cable, and tubing samples for pull testing. Engaging and disengaging samples is quick and easy with an efficient cam design and convenient side slot for sample insertion. Steel rollers are serrated for good grip.

Model No.	Capacity lbF [N]	Weight lb [kg]
G1002	200 [1000]	0.19 [0.09]

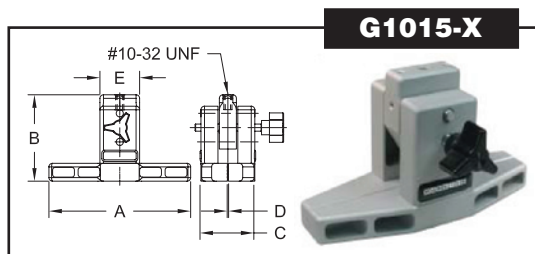
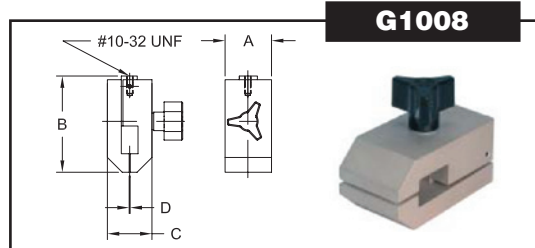


A	B	C	D	E	F	G
1.18 [30.0]	2.00 [50.8]	0.75 [19.1]	0 - 0.25 [0 - 6.3]	0.25 [6.4]	0.64 [16.3]	1.0 [25.4]

FILM AND PAPER GRIPS

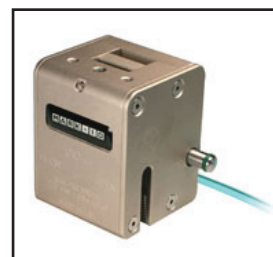
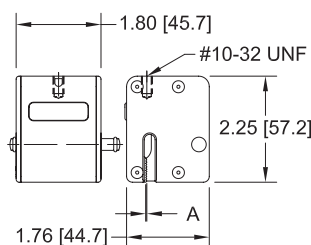
For gripping film, paper, labels, packaging, and other thin materials for tensile and peel testing. Adjustable serrated interlocking jaws grip the sample securely.

Model No.	Capacity lbF [N]	Weight lb [kg]	A	B	C	D
G1008	100 [500]	0.31 [0.14]	1.00 [25.4]	2.50 [63.5]	1.60 [40.6]	0 - 0.15 [0 - 3.8]
G1015-1		0.57 [0.26]	3.00 [76.2]	3.00 [76.2]	1.90 [48.3]	0 - 0.50 [0 - 12.7]
G1015-2		0.67 [0.30]	5.00 [127.0]			
G1015-3		0.77 [0.35]	7.00 [177.8]			



PNEUMATIC FILM AND PAPER GRIP

Fully enclosed, air-powered grip for seal strength testing of packing, elongation testing of various materials, and other tensile testing requirements. Serrated interlocking jaws effectively grip samples for up to 100 lbF of force. The grip features a unique integrated open/close valve for quick sample engagement and disengagement. An air connection kit, consisting of tubing and fittings needed to connect two grips, is available separately.

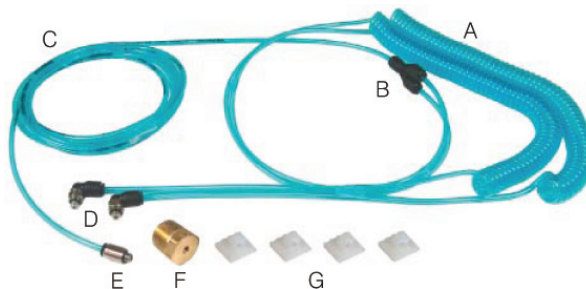


Model No.	Capacity lbF [N]	Weight lb [kg]	Max pressure PSI (MPa)	Air input thread	A
G1046	100 [500] at 100 PSI [0.86 MPa]	0.58 [0.26]	125 [0.86]	#10-32 UNF	0 - 0.13 [0 - 3.3]

Model No.	Description
AC1019	Air connection kit for G1046

The optional air connection kit consists of the following:

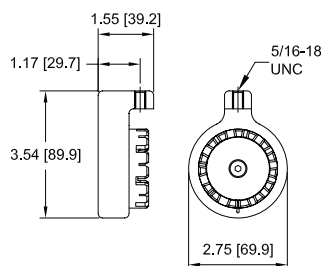
- A. Coiled tubing, 1/8" OD, 1/16" ID, 8" retracted length (qty. 2)
- B. Y-splitter (qty. 1)
- C. Straight tubing, 1/8" OD, 1/16" ID, 5' length (qty. 1)
- D. Elbow fitting, tubing to #10-32M (qty. 1)
- E. Straight fitting, tubing to #10-32M (qty. 1)
- F. Thread adapter, #10-32F to 1/4" NPT M (qty. 1)
- G. Adhesive-backed guide (qty. 4)



WIRE TERMINAL GRIP - TURRET STYLE

For securing wire terminals, cables, connectors, and other samples for pull testing. Indexing wheel contains grooves of varying widths to accommodate a wide range of sample shapes and sizes.

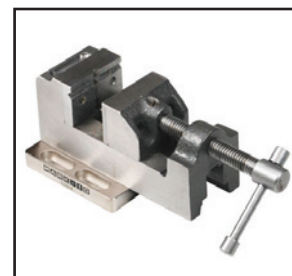
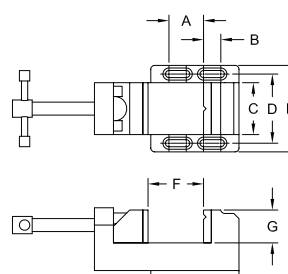
Model No.	Capacity lbF [kN]	Groove Width Range	Weight lb [kg]
G1076	200 [1000]	0 - 0.25 [0 - 6.3]	1.00 [0.45]



WISE GRIP - STANDARD

General purpose vise, for a wide range of tension and compression testing applications.

Model No.	Capacity lbF [kN]	Weight lb [kg]
G1074	500 [2500]	2.00 [1.00]



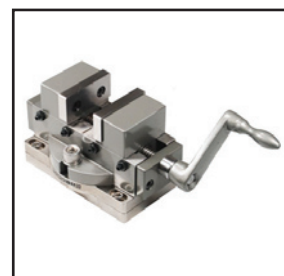
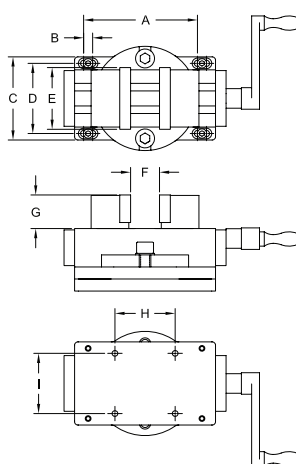
A	B	C	D	E	F	G
1.00 [25.4]	0.50 [12.7]	1.50 [38.1]	2.00 [50.8]	2.50 [63.5]	0 - 1.50 [0 - 38.1]	1.00 [25.4]

VICE GRIP - SELF-CENTERING

General purpose vise, for a wide range of tension and compression testing applications. Self-centering, replaceable jaws can be field-modified to improve sample gripping characteristics.

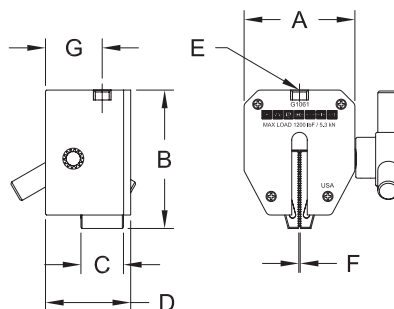
Model No.	Capacity lbF [kN]	Weight lb [kg]
G1070	500 [2500]	5.85 [2.65]

A	B	C	D	E	F	G	H	I
3.78 [96.0]	0.30 [7.6]	2.76 [70.1]	2.33 [59.2]	2.00 [50.8]	0-2.00 [0-50.8]	1.12 [28.5]	2.00 [50.8]	2.00 [50.8]



WEDGE GRIPS

These heavy-duty grips are designed for a range of tensile testing requirements up to 2000 lb [10 kN]. Self-tightening serrated jaws engage the sample through a spring loaded knob and rack and pinion type mechanism. The jaws ride on rollers, eliminating jamming common in conventional wedge grips.



Model No.	A	B	C	D	E	F	G
G1061-1	1.95 [49.5]	2.45 [62.2]	0.375 [9.5]	0.942 [23.9]	5/16-18 UNC	0 - 0.25 [0 - 6.4]	0.616 [15.7]
G1061	1.95 [49.5]	2.45 [62.2]	0.75 [19.1]	1.50 [38.1]	5/16-18 UNC	0 - 0.25 [0 - 6.4]	1.00 [25.4]
G1061-2	1.95 [49.5]	2.45 [62.2]	1.00 [25.4]	1.752 [44.5]	1/2-20 UNC	0 - 0.25 [0 - 6.4]	1.125 [28.6]

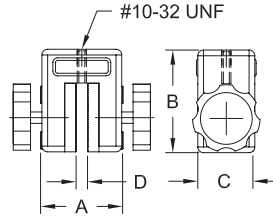


Capacity Model No.	Weight lbF [kN]	Jaw lb [kg]	Jaw Material	Included Hardness	Adapters
G1061-1	1200 [0.9]	0.50 [0.23]	416 SS	43 RC	G1030 #10-32 M/M Stud, 5/16-18 M/M Stud
G1061	1200 [5.3]	0.80 [0.36]			
G1061-2	2000 [9]	0.90 [0.41]			G1066, 1/2-20 M/M stud

PARALLEL JAW GRIP

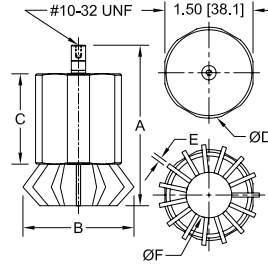
For general pull testing applications. Manually tightened serrated jaws may be individually adjusted.

Model No.	Capacity lbF [N]	Weight lb [kg]	A	B	C	D
G1013	200 [1000]	0.65 [0.29]	1.75 [44.5]	2.25 [57.2]	1.25 [31.8]	0 - 0.25 [0 - 6.3]



MULTI-JAW GRIP

This unique and universal radial grip is designed for gripping round and irregularly shaped items. Typical applications include pull-off tests of fasteners and components in the toy, clothing, and other industries. A swivel adapter is available as an option.



Model No.	Capacity lbF [N]	Weight lb [kg]	A	B	C	ØD	E	ØF
G1056	100 [500]	0.30 [0.14]	3.50 [88.9]	2.30 [58.4] MAX	1.63 [41.4]	1.55 [39.4]	0.075 [1.91]	0.40 - 1.25 [10.2 - 31.7]

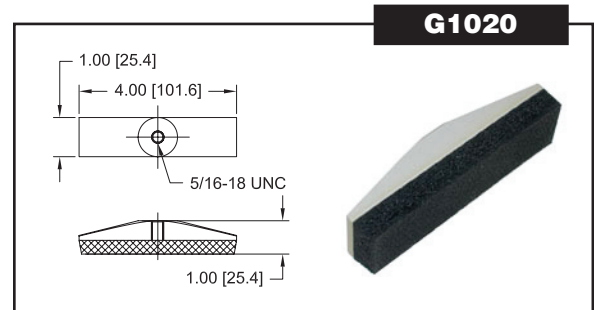
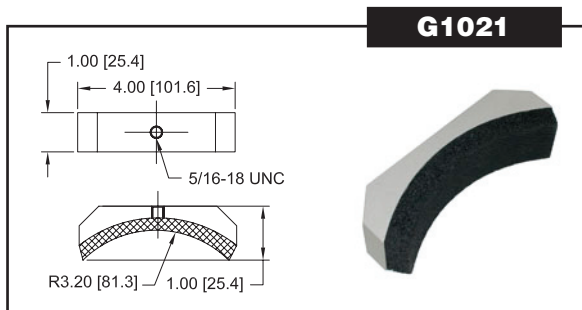
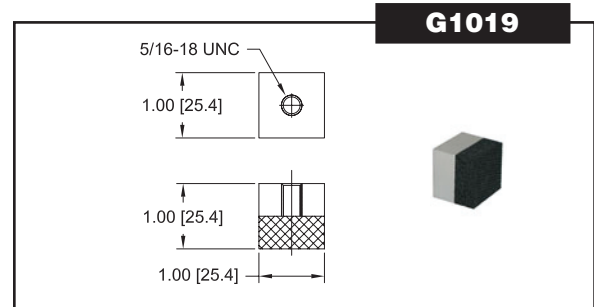
PADDED ATTACHMENTS

For applications in physical therapy and ergonomics, including muscle strength testing, job task requirements, and more.

Model No.	Capacity lbF [kN]	Weight lb [kg]
G1019	500 [2.5]	0.30 [0.01]
G1020	500 [2.5]	0.13 [0.06]
G1021	500 [2.5]	0.25 [0.11]



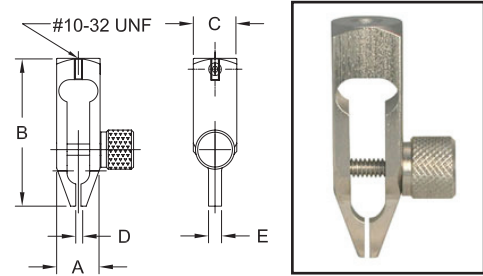
Supplied with a 5/16-18M to #10-32F adapter



MINIATURE COMPONENT GRIP

For testing small and hard-to-reach electronic and mechanical components. Slender profile allows this grip to be used in a wide range of applications.

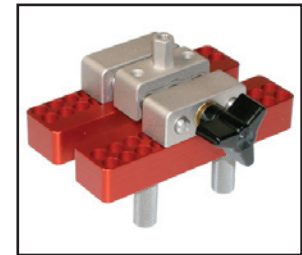
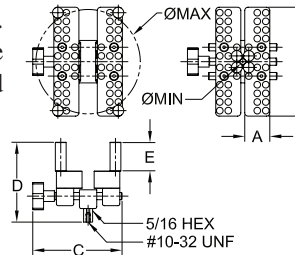
Model No.	Capacity lbF [N]	Weight lb [kg]	A	B	C	D	E
G1003	30 [150]	0.05 [0.02]	0.5 [12.7]	1.7 [43.2]	0.5 [12.7]	0 - 0.07 [0 - 1.8]	0.15 [3.8]



UNIVERSAL CAP GRIP

For gripping bottle and container caps in closure torque testing. Serrated, reversible aluminum jaws effectively grip a wide range of sample shapes and sizes. Mounts directly to Series STH and STJ torque sensors, and Mark-10 force test stands.

Model No.	Capacity lbF [N]	Weight lb [kg]
G1058	50 lb [250 N] or 100 lb in [11.3 Nm]	0.75 [0.334]

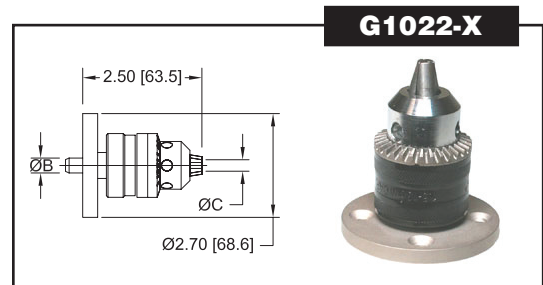
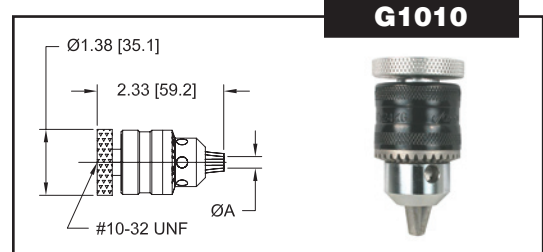


A	B	C	D	E	ØMIN-ØMAX
0.9 [22.9]	3.8 [96.5]	3.2 [81.3]	2.8 [71.1]	1.0 [25.4]	0.20 - 3.50 [5.1 - 89.0]

CHUCK GRIPS

For securing round samples, fixtures, or bits. Although both models may be used in force and torque applications, the G1010 is typically used in force measurement applications, while the G1022 is typically mounted to Series TST torque test stands for torque measurement applications.

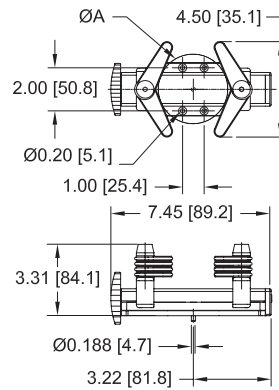
Model No.	Capacity	Weight lb [kg]	ØA	ØB	ØC
G1010	30 lbF [150 N]	0.35 [0.16]	0.062 - 0.375 [1.6 - 9.5]	N/A	N/A
G1022-1	100 lbFin [11.3 Nm]	0.50 [0.23]	N/A	0.188 [4.7]	0.028 - 0.250 [0.7 - 6.3]
G1022-2					0.062 - 0.375 [1.6 - 9.5]
G1022-3					0.078 - 0.500 [2 - 12.7]



UNIVERSAL BOTTLE GRIP

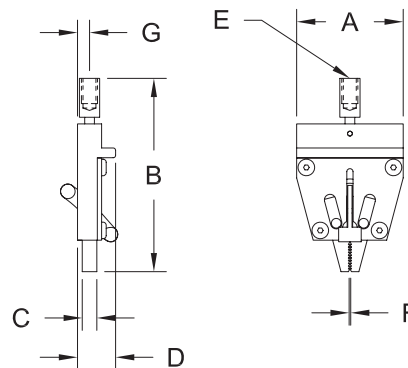
For gripping bottles and containers for closure torque testing. Eight rubber edged gripping arms secure a wide range of sample shapes and sizes and can be individually positioned at angles of up to 180°. Mounts directly to Series TST torque test stands or force test stands (for such applications as top loading testing).

Model No.	Capacity lbFin [Nm]	Weight lb [kg]	ØA
G1023	100 [11.3]	1.50 [0.7]	4.80 [122.0] MAX



MINIATURE WEDGE GRIP

This compact self-tightening grip is ideal for a range of low-force tensile strength tests on small samples. With serrated steel jaws (303 SS) and a handy spring-loaded lever, it has a force capacity of pounds (500 N). This grip has a thru-slot for samples of unlimited width and a swivel mounting attachment. Used with a force gauge and test stand, this grip is useful in many industrial applications.



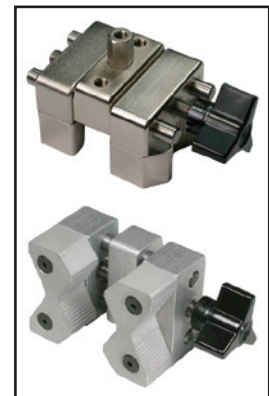
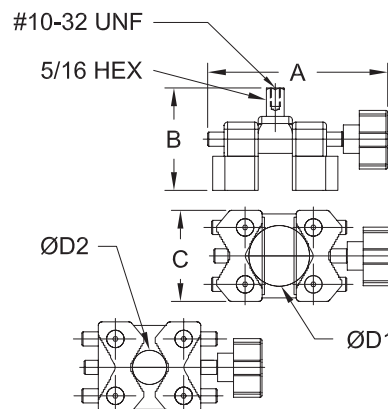
Model No.	Capacity lbF [N]	Weight lb [kg]	A	B	C	D	E	F	G
G1062	100 [500]	0.65 [0.29]	1.37 [34.8]	2.48 [63.1]	0.19 [4.8]	0.49 [12.4]	#10-32 UNF	0 – 0.16 [0 – 4.0]	0.15 [3.9]

UNIVERSAL V-JAW GRIP

This grip is designed for holding round objects during torque testing. Its hex shaft tail fits into a torque sensor chuck while the reversible serrated jaws secure the sample. A knob quickly engages and disengages the same. This grip can accommodate samples with diameters of 0.65 - 1.80 in (16.5 - 45.7 mm). An optional adapter allows the Universal V-Jaw Grip to be mounted to the base of a test stand for force testing.

Model No.	Capacity lbFin [Nm]	Weight lb [kg]
G1053	100 [11.3]	0.39 [0.18]

A	B	C	ØD1*	ØD2*
3.1 [78.7]	2.0 [50.8]	1.6 [40.6]	1.10 – 1.55 [27.9 – 39.4]	0.65 – 1.10 [16.5 – 27.9]

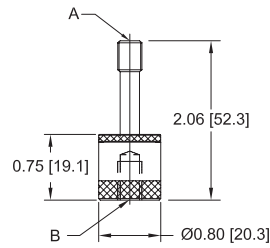


* Jaws must be reversed to switch from ØD1 to ØD2

SWIVEL ADAPTERS

For use between any grip and force gauge to provide a swiveling action for proper sample alignment.

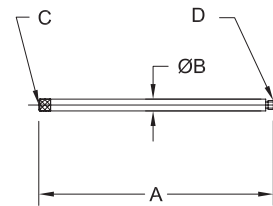
Model No.	Capacity lbF [N]	Weight lb [kg]	A	B
G1018-1	200 [1000]	0.12 [0.05]	#10-32M	#10-32F
G1018-2	500 [2500]	0.27 [0.12]	5/16-18M	5/16-18F



EXTENSION RODS

For use between a force gauge and another attachment, such as a hook or compression plate.

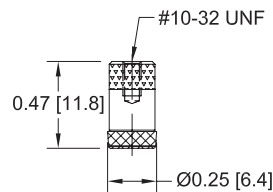
Model No.	Capacity lbF [N]	Weight lb [kg]	A	ØB	C	D
G1024	200 [1000]	0.01 [0.005]	5.0 [127.0]	0.25 [6.4]	#10-32F	#10-32M
G1024-1		0.02 [0.009]	2.0 [50.8]			
G1024-2		0.05 [0.023]	1.0 [25.4]			
G1031	500 [2500]	0.05 [0.023]	5.0 [127.0]	0.50 [12.7]	5/16-18F	5/16-18M
G1031-1		0.10 [0.045]	2.0 [50.8]			
G1031-2		0.25 [0.113]	1.0 [25.4]			



RUBBER TIP

Simulates a finger for testing pushbuttons, membrane switches, touch-screen panels, keyboards, etc.

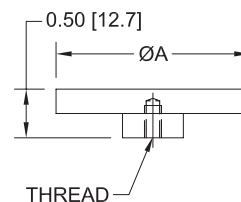
Model No.	Capacity lbF [N]	Weight lb [kg]
G1011	50 [250]	0.01 [0.004]



COMPRESSION PLATES

For compressing springs, foams, cartons, aerosol cans, and many other products.

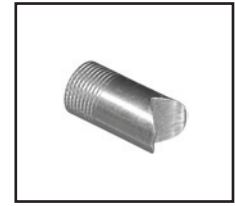
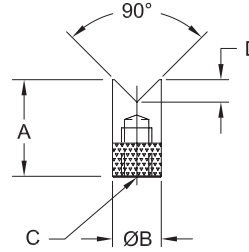
Model No.	Capacity lbF [N]	Weight lb [kg]	ØA	Thread
G1009	200 [1000]	0.08 [0.04]	2.0 [51.0]	#10-32F
G1009-1	500 [2500]	0.27 [0.12]	3.0 [76.2]	5/16-18F



V-GROVES

For compression testing of round or odd-shaped samples.

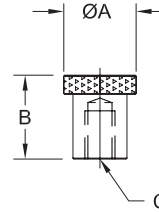
Model No.	Capacity lbF [N]	Weight lb [kg]	A	ØB	C	D
G1027	200 [1000]	0.004 [0.002]	0.50 [12.7]	0.25 [6.4]	#10-32F	0.08 [2.0]
G1034	500 [2500]	0.040 [0.018]	1.00 [25.4]	0.50 [12.7]	5/16-18F	0.25 [6.4]



FLAT HEADS

For compression testing of buttons, membrane switches, etc.

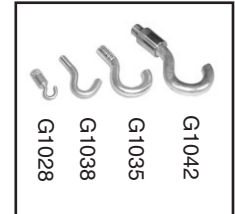
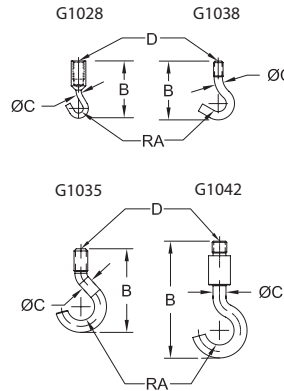
Model No.	Capacity lbF [N]	Weight lb [kg]	ØA	B	C
G1029	200 [1000]	0.01 [0.005]	0.5 [12.7]	0.5 [12.7]	#10-32F
G1036	500 [2500]	0.06 [0.027]	0.75 [19.1]	0.87 [22.1]	5/16-18F



HOOKS

For tensile testing of various samples.

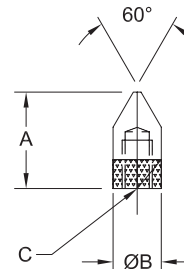
Model No.	Capacity lbF [N]	Weight lb [kg]	RA	B	ØC	D
G1028	20 [100]	0.010 [0.005]	0.05 [1.3]	1.00 [25.4]	0.10 [2.5]	#10-32F
G1038	200 [1000]	0.020 [0.009]	0.20 [5.1]	1.50 [38.1]	0.19 [4.8]	#10-32M
G1035	500 [2500]	0.050 [0.023]	0.30 [7.6]	1.90 [48.3]	0.28 [7.1]	5/16-18M
G1042	1000 [4500]	0.320 [0.145]	0.5 [12.7]	4.10 [104.1]	0.45 [11.4]	1/2-20M



CHISEL POINTS

For compressing or puncturing a variety of samples.

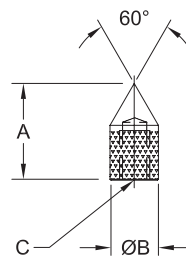
Model No.	Capacity lbF [N]	Weight lb [kg]	A	ØB	C
G1025	200 [1000]	0.003 [0.001]	0.50 [12.7]	0.25 [6.4]	#10-32F
G1032	500 [2500]	0.040 [0.018]	1.00 [25.4]	0.50 [12.7]	5/16-18F



CONE POINTS

For various compression tests.

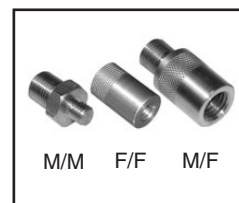
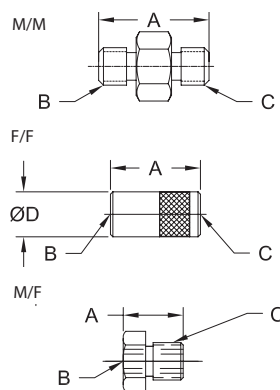
Model No.	Capacity lbF [N]	Weight lb [kg]	A	ØB	C
G1026	200 [1000]	0.003 [0.001]	0.50 [12.7]	0.25 [6.4]	#10-32F
G1033	500 [2500]	0.030 [0.014]	1.00 [25.4]	0.50 [12.7]	5/16-18F



THREAD ADAPTERS & COUPLINGS

For use between force gauge shafts, grips, and/or attachments.

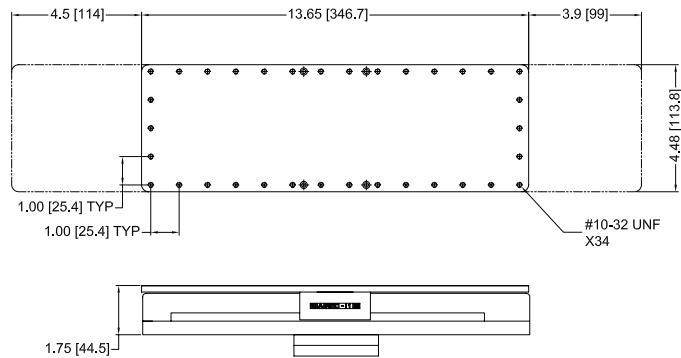
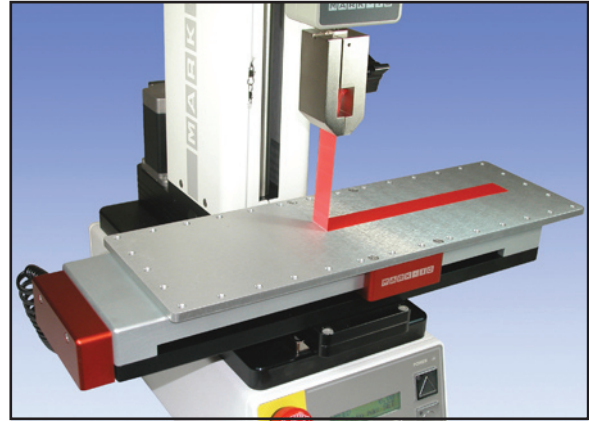
Model No.	Capacity lbF [N]	A	B	C
G1050	100 [500]	0.75 [19.1]	#4-40M	#10-32F
G1051		0.60 [15.2]	#4-40M	#10-32M
G1039	200 [1000]	0.75 [19.1]	#10-32F	#10-32F
G1030		0.50 [12.7]	5/16-18M	#10-32F
G1057		0.75 [19.1]	#10-32F	M6F
G1060		0.75 [19.1]	#10-32M	#10-32M
G1047		0.75 [19.1]	#10-32M	M4F
G1048		0.75 [19.1]	M4M	#10-32F
G1054		0.75 [19.1]	M6M	#10-32F
G1040	500 [2500]	1.00 [25.4]	5/16-18M	5/16-18M
G1037		1.00 [25.4]	5/16-18F	5/16-18F
G1049		1.25 [31.8]	M6M	5/16-18F
G1059		1.00 [25.4]	5/16-18F	1/2-20F
G1041	1000 [5000]	1.00 [25.4]	1/2-20M	5/16-18M
G1066		0.75 [19.1]	5/16-18F	1/2-20M
G1044		Adapter plate, 1/2-20F. Compatible with the following test stands: TSF, TSFM500(-DC), TSB100, TSC1000, and ES10/ES20 (when ordered with 14-1068 mounting plate). Pictured at right.		



G1044

90° PEEL TESTING PLATFORM

The 90° Degree Peel Platform is designed for making force tests on strips of adhesive materials, such as tape, packaging tape or food wrappers. As your force gauge and test stand pull against the material being tested, the 90° Peel Platform moves laterally, maintaining a 90° angle between the adhesive material and the substrate to which it is adhered. Therefore the force vector is always maintained at a perfect perpendicular. This fixture is particularly useful for testing applications in the packaging and food and beverage industries. Typical applications include testing of adhesive films and foil seals on yogurt and juice containers. The fixture's large, flat working table is equipped with numerous mounting holes, and will accommodate a range of sample sizes. As the test stand crosshead moves vertically, the table moves horizontally, maintaining a 90° angle between the table and the pulling force applied. An optional limit switch prevents cable breakage due to excessive movement. The maximum travel distance of the platform is 8,2 inches (210 mm). It is compatible with many motorized test stands.

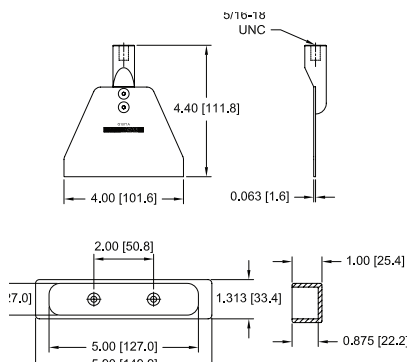


Model No.	Description
G1045	90° Peel Testing Platform
G1045-1	Limit switch for G1045

SCORE BENDING FIXTURE

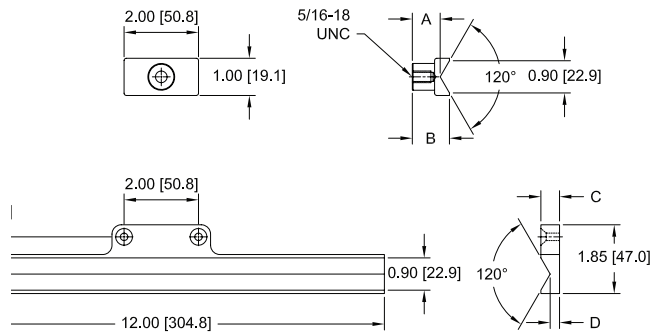
Used to produce a 90° bend in fiber board materials and plastics. Conforms to TAPPI standard T829. Set of upper and lower dies.

Model No.	Capacity lbF [N]	Weight lb [kg]
G1071	50 [250]	Upper: 0.15 [0.67] Lower: 0.30 [0.14]



OPEN FORCE FIXTURE

Used to determine the opening force of flat folded cartons along their score lines. Set of upper and lower dies.



Model No.	Capacity lbF [N]	Weight lb [kg]
G1072	50 [250]	Upper: 0.06 [0.03] Lower: 0.10 [0.05]

BRIDGE AMPLIFIER

COOPER INSTRUMENTS & SYSTEMS