

RADIOLINK PLUS

A wireless tension load cell capable of both weighing and dynamic load monitoring, the latest Radiolink plus from Straightpoint is constructed of high-quality aircraft grade aluminum and features an advanced internal design structure. This internal design structure not only provides the product with an unrivaled strength to weight ratio but it also allows the use of a separate internal sealed enclosure providing the load cell's electronic components with IP67 environmental protection even with the battery cover plate missing, making this industry leading dynamometer even more suitable for use in the harshest environments.

Featuring industry leading wireless technology and range, the versatile Radiolink plus is supplied with an update rate of 3 Hz and can be easily configured to run at industry leading speeds of up to 200 Hz. Data is transmitted wirelessly utilizing the latest in IEEE 802.15.4 (2.4 GHz) technology providing safe, high integrity, error free transmission of both static weight and dynamic load to a wireless handheld controller.

Designed for measurement of both static and dynamic loads the Radiolink plus can also be used in combination with our range of high speed wireless data logging software allowing for simultaneous control, display and real time data logging of up to 100 Straightpoint telemetry load cells. A .csv file format is used for data logging and opens in MS Excel, allowing easy visual presentation of the logged data and simple test certificate generation.

The Radiolink plus utilizes easily sourced AA alkaline batteries and features advanced circuitry designed to protect the unit from damage associated with incorrectly installed batteries. This advanced circuitry extends battery life and the use of easily sourced alkaline batteries eliminates issues associated with rechargeable battery pack charging, failure and replacement.

A full array of wireless accessories are also available including signal boosters, LED wireless scoreboards and base stations with analogue (4-20mA, 0-10v, 0-5v) or digital (RS232/485, Modbus RTU, and ASCII serial communications protocol) outputs.

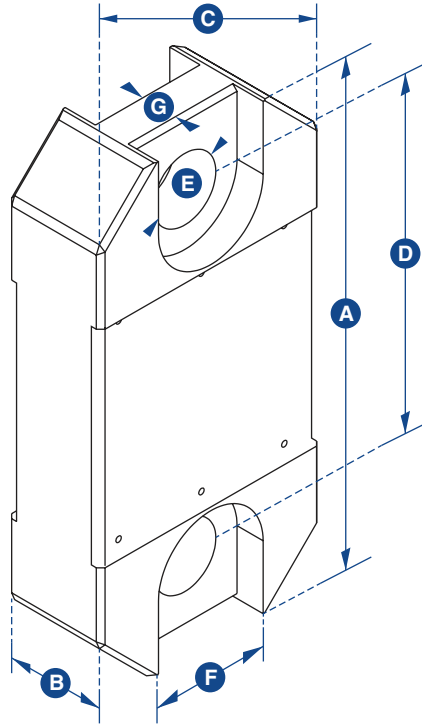
- PROPRIETARY 2.4 GHZ WIRELESS
- INDUSTRY LEADING 2,300 FOOT WIRELESS RANGE
- ERROR FREE DATA TRANSMISSION
- UNRIVALED RESOLUTION
- ENVIRONMENTALLY SEALED
- AUDIBLE OVERLOAD ALARM
- UNMATCHED BATTERY LIFE
- INTERNAL ANTENNAE
- COMPACT SIZE
- REMOTE ON-OFF
- LIGHTWEIGHT
- PEAK HOLD
- ADVANCED OPTIONS AVAILABLE
- TARE
- DESIGN VALIDATED BY F.E.A.



SPECIFICATIONS

CAPACITY:	2200 to 660,000 lbs
RESOLUTION:	1 to 200 lbs
UNITS:	lbs
WEIGHT:	3.1 to 260 lbs.
SAFETY FACTOR:	12:1 to 4:1
BATTERY TYPE:	Handheld-2 x AA, Load Cell 4 x AA
BATTERY LIFE:	Handheld 60 hrs, Load cell 1200 hrs continuous
DISPLAY TYPE:	6 digit 1" LCD
OPERATING TEMP:	14°F to 122°F (-10°C to +50°C)
ACCURACY:	± 0.3% of applied load
FREQUENCY:	2.4 GHz
SYSTEM RANGE:	2300 ft (700 m)
DATA RATE:	3 Hz – up to 200 Hz can be ordered for dynamic load monitoring applications
PROTECTION:	IP67 / NEMA 6
OPTIONAL:	Wall of Cab Mount Bracket available for handheld (Part No. SU3282)

RADIOLINK PLUS



PART NUMBER	RLP1TU	RLP2T5U	RLP5TU	RLP12TU	RLP25TU	RLP35TU	RLP50TU	RLP75TU	RLP100TU	RLP150TU	RLP200TU	RLP250TU	RLP300TU
Dimension A	8.03	8.03	9.80	12.01	13.39	15.47	16.69	18.5	23.94	26.38	27.56	27.56	31.73
Dimension B	1.69	1.69	1.69	1.85	2.36	2.95	2.95	2.95	3.90	3.90	5.67	5.67	5.91
Dimension C	3.98	3.98	3.98	3.98	4.53	4.96	6.42	7.95	10.04	11.93	12.60	12.60	16.77
Dimension D	5.75	5.75	6.50	7.60	8.46	8.86	9.06	10.24	12.60	14.17	13.78	13.78	13.78
Dimension E	0.96	0.96	1.50	1.87	2.17	2.99	2.99	2.99	4.29	4.29	5.20	5.20	6.30
Dimension F	1.89	1.89	2.60	Not available on this capacity									
Dimension G	0.75	0.75	1.26										
Crosby Shackle	G2130						G2140						
Loading Pin Ø	3/4"	3/4"	1"	1-3/8"	2"	2-1/4"	2-1/4"	2-3/4"	3-1/4"	3-3/4"	4-3/4"	5"	6"