

# PTG 400 SERIES - GENERAL PURPOSE PRESSURE TRANSDUCER

The PTG 400 is a competitively priced, high quality all stainless steel, pressure sensor intended for use in the measurement of gases and liquids. This series is suitable for automotive diagnostics tools, refrigeration, hydraulics, pneumatics and data loggers. The PTG 400 pressure sensors are designed specifically for applications with demanding price and performance requirements. These sensors offer both millivolt and high level outputs. The high strength sensing element is machined from a solid piece of stainless steel, resulting in construction that contains no silicone oil, welds or internal O-rings. Measurements are available in gauge pressure covering ranges up to 10,000 PSI.

- **LOW STATIC AND THERMAL ERRORS**
- **WELDED CASE**
- **SUITABLE FOR HIGH SHOCK AND VIBRATION**
- **EMI/RFI PROTECTION**
- **CABLE, DIN OR 1/2" CONDUIT PIPE ELECTRICAL TERMINATION**



### SPECIFICATIONS

**PRESSURE RANGES:** 25 to 10,000 PSI

**ACCURACY:** ±0.25% to ±.5% F.S

**MATERIAL:** 17-4PH Wetted Parts  
304 SS Housing

**TEMPERATURE RANGE:** 30° to 130° F - Compensated

**OUTPUT:** 0.5-4.5 Vdc Ratiometric  
1-5, 1-6 Vdc, 10 mV/V or 4-20 mA

**EXCITATION:** 5 Vdc, or 10-28 Vdc

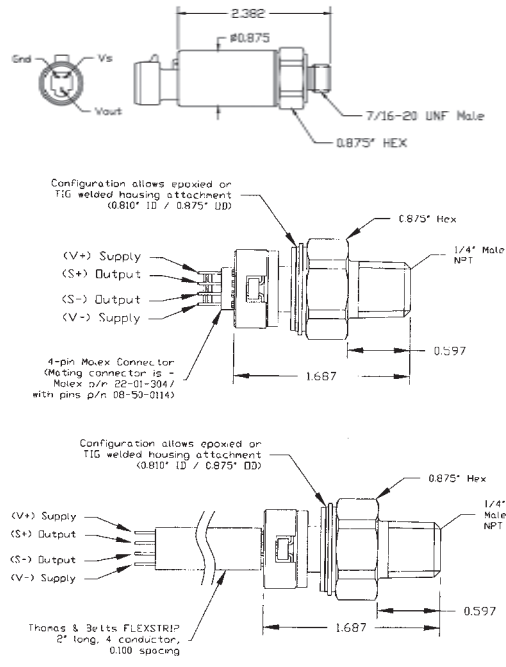
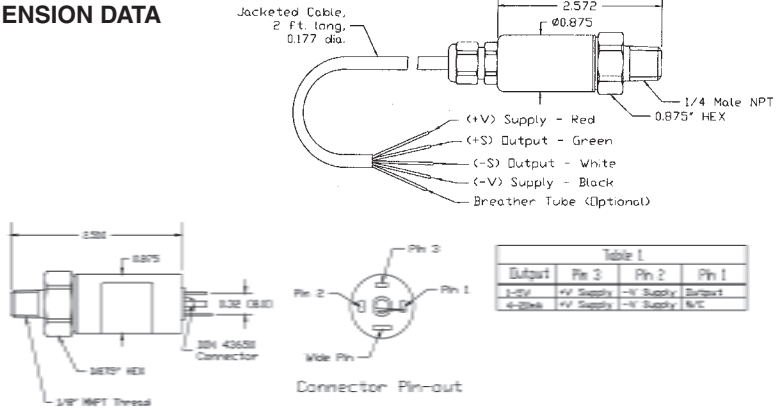
**SAFE OVERLOAD:** 200% Over Capacity

**BURST PRESSURE:** 5X or 20,000 PSI whichever is less

**CABLE:** Specify Below

**NOTE:** Certifications available for .5% units at additional cost. Certifications come standard for .25% and .1%.

**DIMENSION DATA**



Output	Pin 3	Pin 2	Pin 1
1-5V	+V Supply	-V Supply	Output
4-20mA	+V Supply	-V Supply	V/C

### AVAILABLE RANGES

-14.7-25 (compound), 25, 50, 100, 200, 500, 1000, 2500, 5000, 10,000 PSI

For Accuracy Specify the following:  
 PTG 400 - .5% F.S. Unamplified (no certs)  
 PTG 401 - .25% F.S. Unamplified  
 PTG 402 - .5% F.S. Amplified (no certs)  
 PTG 403 - .25% F.S. Amplified

Pressure Connection:  
 A = 1/4" NPT Male  
 B = 1/8" NPT Male  
 F = 7/16"-20 UNF Male

Pressure Units:  
 B=Bar, K=Kg/cm<sup>2</sup>, P=PSI

Outputs:  
 1= 0.5- 4.5 V ratiometric  
 3= 1-5 Vdc  
 4= 4-20 mA  
 6= 1-6 Vdc  
 A= 10 mV/V

Wetted Material:  
 0=17-4PH  
 1=316 L

Electrical:  
 A=2Ft, B=4Ft, C=6Ft, D=10Ft,  
 E=Mini DIN 43650, F=Packard  
 Metripack 150 3-Pin Conn.

Order Code Example:  
 PTG 400-A-XXX-B-A-A-0

Wetted Material

Electrical Termination

Outputs

Pressure Units

Pressure Range

Pressure Connection

Accuracy Class

XXX= Pressure Range

www.cooperinstruments.com

1-800-344-3921

sales@cooperinstruments.com

5/5/14